



PARTNERSHIP IN PRINT



ISSUE NO. 73 FEBRUARY 2022

HELLO AGAIN!

I couldn't be more excited to be able to share this year in Supply ministry with Annette and with you all.

Some of you may remember me from the time (7 years ago?) when we spent almost a year together imagining a new future as a partnership, and then seeking new ministry. I remember many Saturday mornings coming to Riddells Creek UC on frosty mornings, seeing the urn on the boil, smells of delicious baking, tables set up, and lots of chatter and good feeling in the room. I am still inspired and so impressed by the honest way people from every congregation committed to coming together over a significant period of time, voiced their hopes, struggled with concerns and got to know each other in a real and very caring way. Then finally the thrilling day came, after congregations had met, when reps one by one announced their congregation's decision, and the partnership was born. I know little of what has happened since but I hope amongst the inevitable challenges and frustrations, you have continued to grow in love for each other, in openness to change, and in thanksgiving for what the partnership and our Lord Jesus Christ has both enabled, and called you to.



I couldn't have imagined at that time, that one day I'd be fortunate enough to have the opportunity to return and work alongside you in a closer way. So it was an opportunity missed to have impressed you with my ability to say in a Schwarzenegger accent, "I'll be back!"

And for those who don't know me, I am a UC Minister. At the time of the forming of the partnership, I was in a Presbytery role (Port Phillip West) with responsibility for supporting the development of mission and strategy in congregations. Since that time, I have also completed a role as Presbytery Minister with Loddon Mallee Presbytery. That Presbytery stretches from just above the Partnership's Northern congregations, up through Bendigo, the Mallee and over the NSW border. It was out of the experience of the MR Partnership that I was able to share that vision with a large group of isolated Mallee congregations situated within an area of several hundred kilometres, who till then functioned without any support, unable to afford even Supply ministry. As a result, they found a way to have an ongoing ministry team and an opportunity not just to survive but thrive. It will be up to them how much they now use that opportunity, and I pray it isn't spoiled by pettiness, needy egos and resistance when the going gets hard, as so easily happens. So please know that what you have done has inspired new visions for others.

(Continued on page 2)

LECTIONARY Readings Year C

Epiphany

An 'Epiphany' is a revealing, appearing or manifesting of something or someone, and in this season the Church reflects on the manifestation of Christ to all people. The length of this period varies depending on the date of Easter.

Date	Day/Season	Colour	1st Reading	Psalm	2nd Reading	Gospel
6 Feb	Epiphany 5	G	Isaiah 6:1-8, (9-13)	138	1 Corinthians 15:1-11	Luke 5:1-11
13 Feb	Epiphany 6		Jeremiah 17:5-10	1	1 Corinthians 15:12-20	Luke 6:17-26
20 Feb	Epiphany 7		Genesis 45:3-11, 15	37:1-11, 39-40	1 Corinthians 15:35-38, 42-50	Luke 6:27-38
27 Feb	Transfiguration	W	Exodus 34:29-35	99	2 Corinthians 3:12-4:2	Luke 9:28-36 (37-43)

Lent

A season of preparation and discipline that begins on Ash Wednesday and concludes at sundown on Holy Saturday. During the forty weekdays and six Sundays in Lent, the church remembers the life and ministry of Jesus and renews its commitment to him in Christian discipleship. This season is the traditional time to prepare for baptisms and confirmations to be celebrated at the Easter Vigil or on Easter Sunday, or during the season of Easter.

2 Mar	Ash Wednesday		Joel 2:1-2, 12-17 or Isaiah 58:1-12	51:1-17	2 Corinthians 5:20b-6:10	Matthew 6:1-6, 16-21
6 Mar	Lent 1		Deut 26:1-11	91:1-2, 9-16	Romans 10:8b-13	Luke 4:1-13

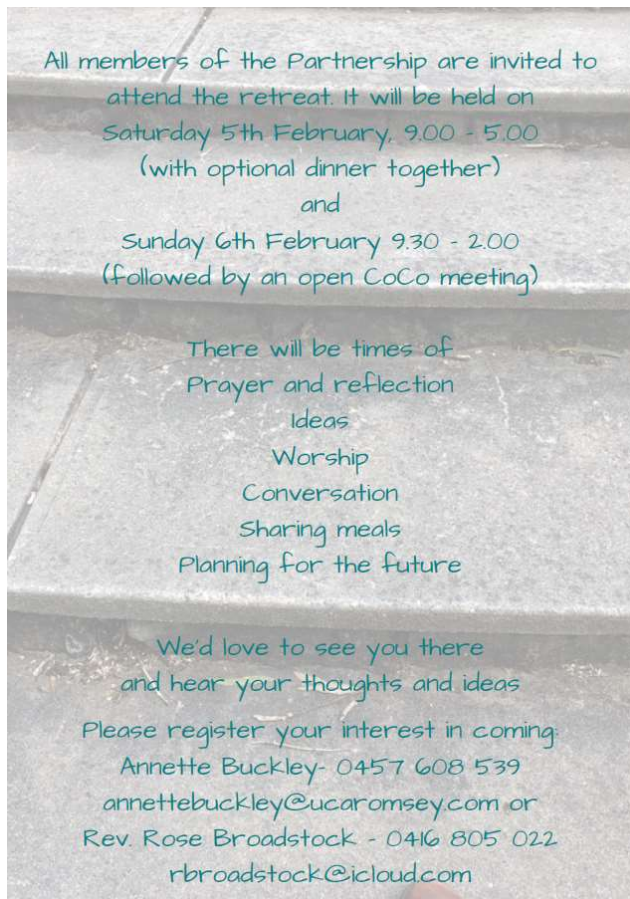
Colours: P – Purple

W – White

G – Green

R – Red

B – Black



(From page 1) In terms of my own future plans, I completed in 2021 the qualification to be an IIM (Intentional Interim Minister) where Ministers take short term placements, perhaps a year at a time, in congregations that need help with transition, healing and growth, so that I think will be my next ministry step.

I am married to Lynden, also a UC Minister, and we have three children, 26, 30 and 32. One of my biggest (shock) learnings there, is that Year 12 graduation doesn't mean the parenting job is done! For the last 6 years we have lived in our own home for the first time, in Melton.

I am very much looking forward to seeing again those of you I know, to meeting those I don't, and to finding ways I can support Annette and you all as you continue on your journey to discover what "No eye has seen, no ear has heard, and no mind has imagined - what God has prepared for those who love him." (1 Cor 2:9).

Rev Rose Broadstock

White Goose: still some work needs doing – not opening quite yet – do stay tuned!

Lenten Studies: Coming up next month...

A CATASTROPHE FOR TONGA

I have no memory of my babyhood in Tonga, but my memories of several visits over the past 30 years are of beautiful islands and harbours and welcoming, generous people. It is distressing to see on TV houses, gardens and roads covered with volcanic ash. The water supply is contaminated and crops are ruined. Many Tongans depend on their "gardens" (like small farms) for their existence, as there are not enough jobs to go around. These people will need help for some time to come.

It is heartening that ships are now arriving (22nd January) with fresh water and water purifiers, as well as medical and other equipment. But the larger task of rebuilding is long-term and is daunting. On some smaller islands, almost every building was destroyed by the tsunami, and on the west coast of the main island, Tongatapu, there was much damage also.

For most Tongans their Christian faith is vitally important and they look to their church leaders for guidance and support. This is where the Uniting Church comes in, as we have an official partnership with the largest of the Tongan churches, the Free Wesleyan Church of Tonga.

- Donations given through the Uniting Church's agency Uniting World will go to the Free Wesleyan Church for "on the ground" support. Money can be given by direct transfer to BSB 032-014, Account Number 182657, Description: Tonga Tsunami Link for more details available here: <https://donate.unitingworld.org.au/tonga>
- An alternative is by phone to the National Council of Churches' agency Act for Peace (the Christmas Bowl people) on 1800-760-011.

On 20th January a national prayer vigil was held online, by the Uniting Church. It is important that this prayer continue in coming months as support not only for Tonga itself but for the many Tongan Australians.

D'Arcy Wood

Tonga, then and now: 98 years ago D'Arcy's parents set sail for the Friendly Islands, Tonga, beginning many years of close friendship. While we wait anxiously for more information about how these friends survived the fury of a volcanic eruption, there are stories to tell of personal interactions as well as the very strong relationship between the Free Wesleyan Church of Tonga and our own Uniting Church. **So do join with us at Gisborne Uniting Church on Tuesday 8 February (at Muffins'n'More) from 10a.m to share stories, see beautiful Tongan handicrafts and even learn to sing the Tongan national anthem!**

Missing something? If you know of meetings or events happening in your congregation and you're not seeing them here in PiP please let Robyn know – you will help us all to be informed

Macedon Ranges Partnership Retreat ...Next Steps...

5th and 6th February, 2022

Kyneton Uniting Church

The time has come, the Walrus said, to talk of many things...

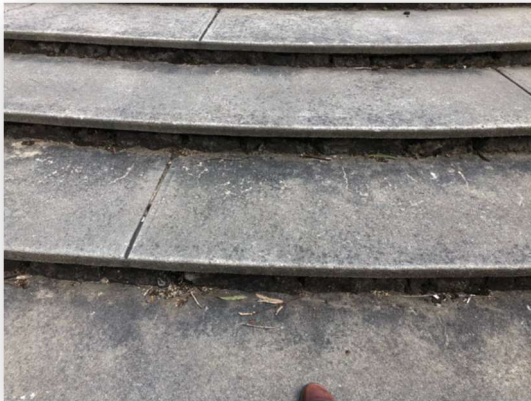
Well, perhaps. But sometimes the time has come for the talking to be more focused, and for talking to lead to action.

The Macedon Ranges Partnership is, we believe, at a significant moment in its life. We have undergone substantial change in the last 2 years, much of it in the last 12 months. If we look back to January 2021:

- we had 2 full-time ministry agents and one half-time. We now have 1.5 EFT ministry
- we were dealing with the Presbytery processes following our unhappiness with the 5-year review report
- the Lancefield and Mt Macedon congregations were in the process of leaving the Partnership

In the year prior, and in the time since, we have dealt with the constantly changing COVID regulations, meaning that our 'normal' activities have been significantly disrupted. As well as this, new initiatives which were to begin, particularly the work at the Woodend and Riddells Creek sites, were put on hold. Despite the negative impacts of COVID-19, we have also learned much that is valuable. We have been forced to consider what is most important to our life and witness, and we have found untapped resources of creativity, resilience and co-operation. We are keen to continue to explore the lessons we've learned, and not just to aim to return to 'normal' as we move beyond the periods of forced isolation and curtailment of our activities.

Our hope is that the Retreat will give us the opportunity to discern the way forward in this future, considering what we have learned in the recent past, and what has changed in the Partnership and beyond in the last two years. Some members of the Partnership have been engaged in some recent workshops and discussions that have provided some encouraging and hopeful ideas. Some of you will have other ideas and questions to share.



We aim to come away from the Retreat with an answer to the question:

What are the concrete steps we will take to continue to live out the vision, values and goals of the Macedon Ranges Partnership in 2022?

The answer to that question will guide the priorities for ministry this year and into the future. In order to arrive at our answer, we'll begin by asking people to come to the Retreat ready to answer the question:

As we consider the Partnership now and in the immediate future, what issues are vital to address?

In answering our question, it is important to keep the stated Vision, Values and Goals of the Partnership at the forefront of our mind.

The process we've devised starts off with the opportunity for everyone to name what is most important to them, followed by working together on what is most important to the group as a whole. We'll do this in a spirit of prayer and discernment together, listening to each other and the leading of the Spirit present among us when we gather.

We plan to avoid ending up with 'motherhood statements' or 'pie-in-the-sky' thinking. We aim to work together to end up with a list of tasks to be undertaken, along with an indication of who will do what, and how they will be resourced. We have great faith in the collected wisdom of our members to enable us to do this.

We hope that many members of the Partnership congregations will attend the weekend and share their ideas, questions, gifts, resources, suggestions and prayers. We'd like to provide the opportunity for everyone to have some input, so we would welcome contributions from people who are not able to attend in person. We would consider trying to set up a Zoom link to the Retreat if there are people who would like to attend, but would prefer not to attend in person. Please contact Annette or Rose if you are unable to come but would like to participate in some other way.

A vital part of this weekend is prayer. We would ask that all members of the Partnership congregations include the Retreat weekend in your prayers in the days leading up to it, and over the weekend if you are not able to join us. We would like to think that this process is all being supported by the prayers of the people of God in Uniting Churches in the Macedon Ranges.

We look forward to sharing this important time with you, and we look forward to finding out where God is calling us and how we will see God working in and through the Partnership in this exciting time. May we step forward into God's hope-full future with courage and joy.

Rev. Rose Broadstock

Ps. Annette Buckley

Macedon Ranges Partnership Vision, Values and Goals (MOU June 2021)

In June 2021, the congregations signed an amended version of the original Memorandum of Understanding that created the Partnership. It included the following Vision, Values and Goals:

VISION:

Several congregations of the Macedon Ranges — Romsey, Gisborne, Tylden and the Mia Mia-Kyneton Parish (Kyneton, Mia Mia, Barfold, Metcalfe, Sutton Grange) and potential faith communities in Woodend and Riddells Creek— have agreed to participate in the next stage of the **Macedon Ranges Partnership**, a Presbytery supported arrangement. The Regeneration Ministry team will provide leadership to the congregations in their life of worship and witness and in the development of new ways or fresh expressions of being missional Church.

It is a new vision of co-operation which lead to the establishment of the MRP, and this is not seen to be for the purposes of rationalisation or survival. It is a vision for change and development. It is based on the belief that more can be achieved in partnership than alone with limited resources. It is based on a shared commitment to and a vision of exploring new models of church, the building of strong relationships with community, new models of worship and mission, and a range of worship times.

VALUES:

Theological reflection: "The Church as the fellowship of the Holy Spirit confesses Jesus Christ as Lord over its own life and also confesses that Jesus is head over all things, the beginning of a new creation, of a new humanity." (Basis of Union, para.3)

As its core they have chosen **FAITH, HOPE and LOVE**.

Faith: We trust in God who owns us as God's people in this region, and who brings us together in his name. We trust in the Spirit who leads us in God's mission in the world, and in our local communities. By the Spirit we will share the Gospel of Jesus Christ as we learn new ways to be the Church here in worship, witness and service.

Hope: All people live by hope, and as Christians we have an expectant hope in God's future. At this point in our history that future includes the continuing renewal of the Church here and throughout the world and a fruitful witness and outreach to the wider community.

Love: "God's love has been poured into our hearts through the Holy Spirit" (Romans 5:5). We will learn to embody that love by trust in and respect for each other, for our ministers and leaders, and for the Macedon Ranges Partnership. We commit ourselves to continually turn from self-centredness, and to choose instead open communication, mutual support and hospitality as our relationship develops.

GOALS OF THE MACEDON RANGES PARTNERSHIP

The goals of the next stage of the MRP are:

- a) To provide worship to encourage, engage and connect with community.
- b) To encourage each other in love and service of the community.
- c) To seek to educate and resource members of the partnership in 'New and Renewing' mission.
- d) To continue to link with the community through renewing mission, worship opportunities and social justice and community events.
- e) Explore development of Information Technology (IT) facilities across the partnership to resource ministry and mission moving forward.

Sunday	Monday	Tuesday	Wednesday	Thursday	Friday	Saturday
		1	2	3	4	5
			1.30pm Romsey CC		10am Prayers at Gisborne	Partnership Retreat
6	7	8	9	10	11	12
10am Partnership Service Kyneton and retreat 2pm Open Coco meeting	2.30pm Woodend Faith Community	10am Muffin'n'More at Gisborne - Tonga	1.30pm Romsey UCAF		10am Prayers at Gisborne 6.30pm Fish & Chips Worship Kyneton HC	10am-3pm PPW Presbytery Meeting, Hoppers Crossing
13	14	15	16	17	18	19
9.30am Gisborne HC 10am Northern Churches HC	2.30pm Woodend Faith Community				10am Prayers at Gisborne	*PiP articles due tomorrow please
20	21	22	23	24	25	26
World Day of Social Justice 9.30am Kyneton HC	2.30pm Woodend Faith Community		10am Ministers Munch Redesdale		10am Prayers at Gisborne 6.30pm Fish & Chips Worship at Kyneton	
27	28	<h1>February 2022</h1>				
Transfiguration 10am Romsey HC	2.30pm Woodend Faith Community 3.30pm RM Begg					

PRAYER AND WORSHIP

Kyneton Fish & Chips Fortnightly worship service – BYO meal (it doesn't have to be fish and chips!) not for sharing due to ongoing COVID restrictions, held on the Friday after the 1st and 3rd Sunday in the month – this month on 11th & 25th February at 6.30pm.

Prayer Meetings Every week in the Gisborne Uniting Church on Fridays at 10am

Redesdale Ministers Munch (and worship) in February will be held at 10am at the General Store in Redesdale on Wednesday 23rd February – all welcome.

Woodend Faith Community 2.30pm Mondays at St Andrew's Woodend. All are welcome.

Worship times across the partnership Current Sunday service times:

- Tylden is at 9am
- Gisborne is at 9:30am
- Romsey is at 9am
- Kyneton is at 9.30am on 1st & 3rd Sundays
- Northern Churches at 10am

Partnership Service to be held as part of the Retreat at 10am on Sunday 6th February

Romsey Uniting Church meetings and worship

During January 2022, Romsey and Lancefield congregations joined together for combined worship services. We all enjoyed worshipping together and catching up over morning tea.


Wednesday February 2nd 1.30pm Church Council meet - first meeting for 2022.

Sunday February 6th 10am Partnership Service at Kyneton. There will not be a service at Romsey this day.

Wednesday February 9th 1.30pm Romsey UCAF meet.

Sunday February 13th and 20th 9am Worship Service conducted by a Lay Leader.

Sunday February 27th 9am Worship Service and Holy Communion conducted by a Minister.





DEVELOPING A + CULTURE OF WELCOMING + Online Workshops

Churches will:

- + Develop their own Welcoming Pathway.
- + Learn the typical process of how people come to faith.
- + Understand why ongoing inclusion is the key.
- + Improve entry points into their church.

WEDNESDAY EVENINGS 7:30-8:30pm (4 Weeks) Commencing 2 nd February. Register for Wednesday by clicking here	THURSDAY AFTERNOONS 2-3pm (4 Weeks) Commencing 3 rd February. Register for Thursday by clicking here
--	--

 Uniting Church in Australia
SYNOD OF VICTORIA AND TASMANIA

 equipping Leadership for Mission
Priorities, Focus & Advocacy

MRPUC Retreat ...Next Steps...

Program: Saturday 5th Feb

- 9.00** Gathering, name tags, coffee & tea
- 9.30** Worship
- 10.00** Introduction
- 10.15** Working on the question as individuals, then in small groups
- 10.45** Morning tea
- 11.00** Plenary session – reporting back from small groups
- 12.00** Lunch
- 12.45** Prayer
- 1.00** From the morning's work, defining the four most important areas to work on
- 1.15** Brainstorming together on actions in the four areas
- 3.30** Afternoon tea
- 4.00** Plenary – discerning together the concrete steps to be taken next on each of the four areas
- 5.00** End for the day. Go to dinner – at a local venue

Sunday 6th Feb

- 9.30** Gathering, coffee & tea
- 10.00** Worship
- 11.30** Morning tea, presentation of the previous day's work. Finding people to work on the concrete steps discerned on Saturday
- 12.30** Lunch
- 2.00** Open CoCo meeting, focusing on the work done over the weekend.

See you there!!

Presbytery of Port Phillip West has a website full of resources and information: <https://ucappw.org.au/>

Address label

Partnership in Print is a monthly magazine produced by the Uniting Church in Australia – Macedon Ranges Partnership and is available on the last Sunday of each month, except December

Macedon Ranges Partnership is part of the Port Phillip West Presbytery of the Uniting Church in Australia.

<u>MINISTERS</u> Pastor Annette Buckley Ph 5429 5351 or 0457 608 539 annettebuckley@ucaromsey.com	Rev Rose Broadstock Ph 0416 805 022 rbroadstock@icloud.com
--	--

<u>OFFICE PHONE</u> (03) 5428 6920	<u>OFFICE LOCATION AND POSTAL ADDRESS</u> 3 Sutherland Rd, Riddells Creek, 3431	<u>PARTNERSHIP EMAIL ADDRESS</u> macedon.ranges.partnership@hotmail.com
---------------------------------------	--	--

PARTNERSHIP WEBSITE www.macedonrangesunitingchurch.org.au

CONGREGATION DETAILS	CHAIRPERSON	SECRETARY	TREASURER	PROPERTY	COCo REPS
<u>SUTTON GRANGE</u> - Church Access Rd <u>MIA MIA</u> - Matheson Rd <u>BARFOLD</u> - Heathcote-Kyneton Rd <u>METCALFE</u> - 3 Metcalfe-Kyneton Rd	Pip Elston	Helen Aldridge miamiakynetonu c@outlook.com	<u>Finance Committee</u> Helen Carey (Treas) Roy Gibbs Jenny Elston	Church Council Executive	Marge Townrow Dot Smith
<u>KYNETON</u> - 54 Ebden St (PO Box 892)					Pip Elston, Lyn Ward (alt)
<u>ROMSEY</u> - 25 Pohlman St (PO Box 264, Romsey, 3434)	Noel Shaw	Jeni Clampit	Roger Baker		Noel Shaw, Jeni Clampit, Jay Brooks (alt)
<u>TYLDEN</u> - Trentham Rd (c/o Tylden General Store, Tylden, 3444)	Max Hinneberg	Janet Cole	Dawn Hinneberg	Max Hinneberg	Bronwyn Hewitt, Janet Cole, Dawn Hinneberg
<u>WOODEND</u> - 37 Forest St (PO Box 34, Woodend, 3442)					
<u>GISBORNE</u> - 23 Brantome St	Bev Gilbertson	Colin Chapman	Paul Gilbertson	Neil Moorhouse Rob Dunstan	Colin Chapman, Keith Hallett, Paul Gilbertson

Next Partnership in Print is the March edition and I will be needing any articles, stories, photos by World Day of Social Justice which is **Sunday 20th February 2022**.

Please write to me at zumstein@mmnet.com.au or you can pop something in the post or my letterbox, or call – I'm happy to take notes over the phone too.

Robyn (contact details at bottom of Contact list under Z 😊)

Printing donated by

